



LEADERS IN CANNABIS EDUCATION

Simply Mary Jane LLC
Professional Patient Advocates
(425)877-0479
Bothell, WA 98021
medcannabisconsut@gmail.com
simplymaryjane.net

**ONLY WHEN CANNABIS HAS CHANGED YOUR LIFE,
WILL YOU UNDERSTAND WHY QUALITY MATTERS.**



SUGARLEAF
CANNABIS PERFECTED

The Endocannabinoid System

Brain cells (neurons) communicate with each other by sending chemical messages. The chemicals (neurotransmitters) cross a gap between neighboring neurons before attaching to their specific receptors.

Presynaptic:

The neuron sending a message by releasing a chemical when signaled to do so

Postsynaptic:

The neuron receiving the message when its receptors are activated by specific chemicals (neurotransmitters)

Neurotransmitters:

The chemical messengers that travel from one brain cell to another

Receptors:

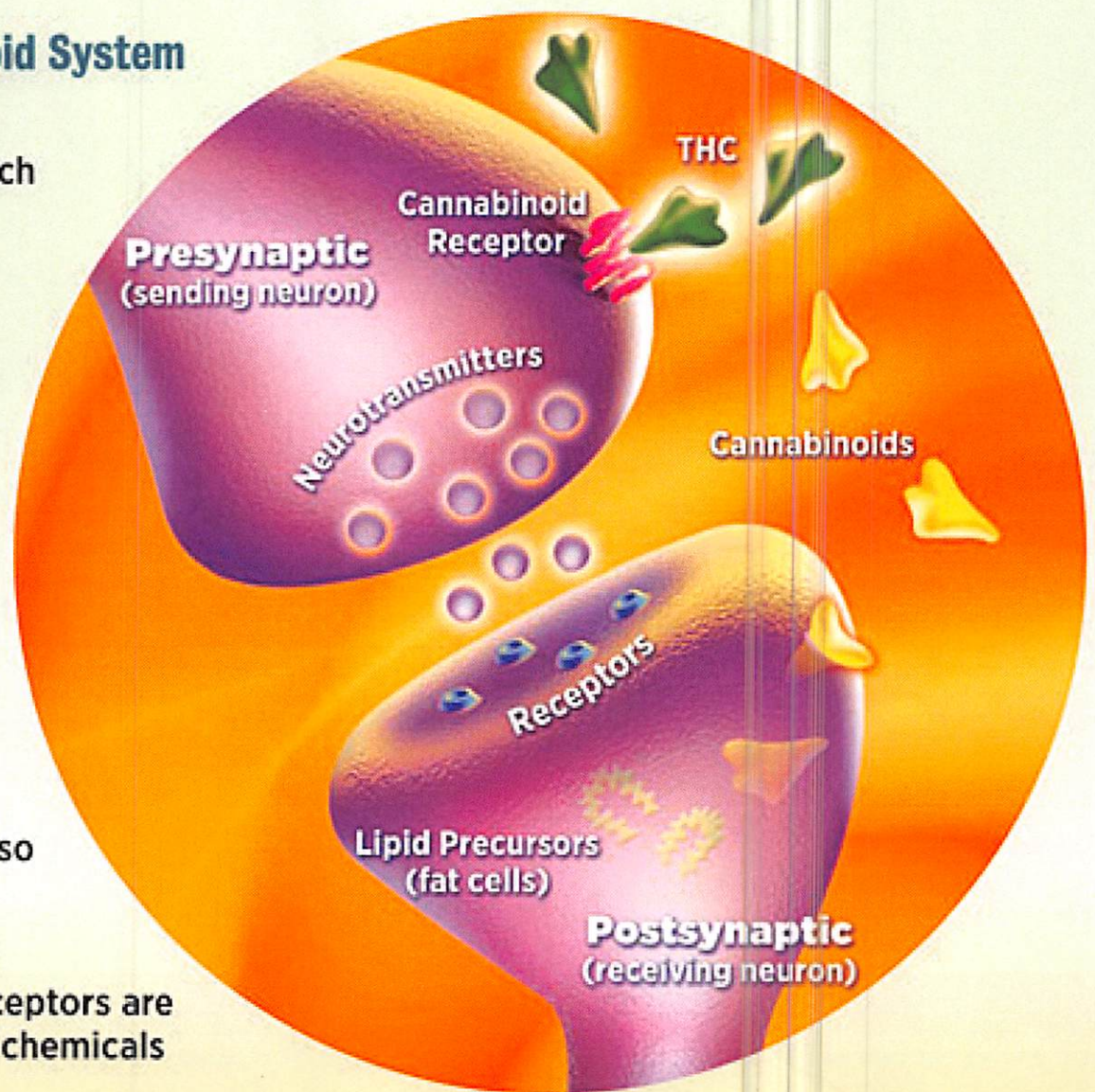
Activated by neurotransmitters, receptors trigger a set of events that allows a message to be passed along to other neurons

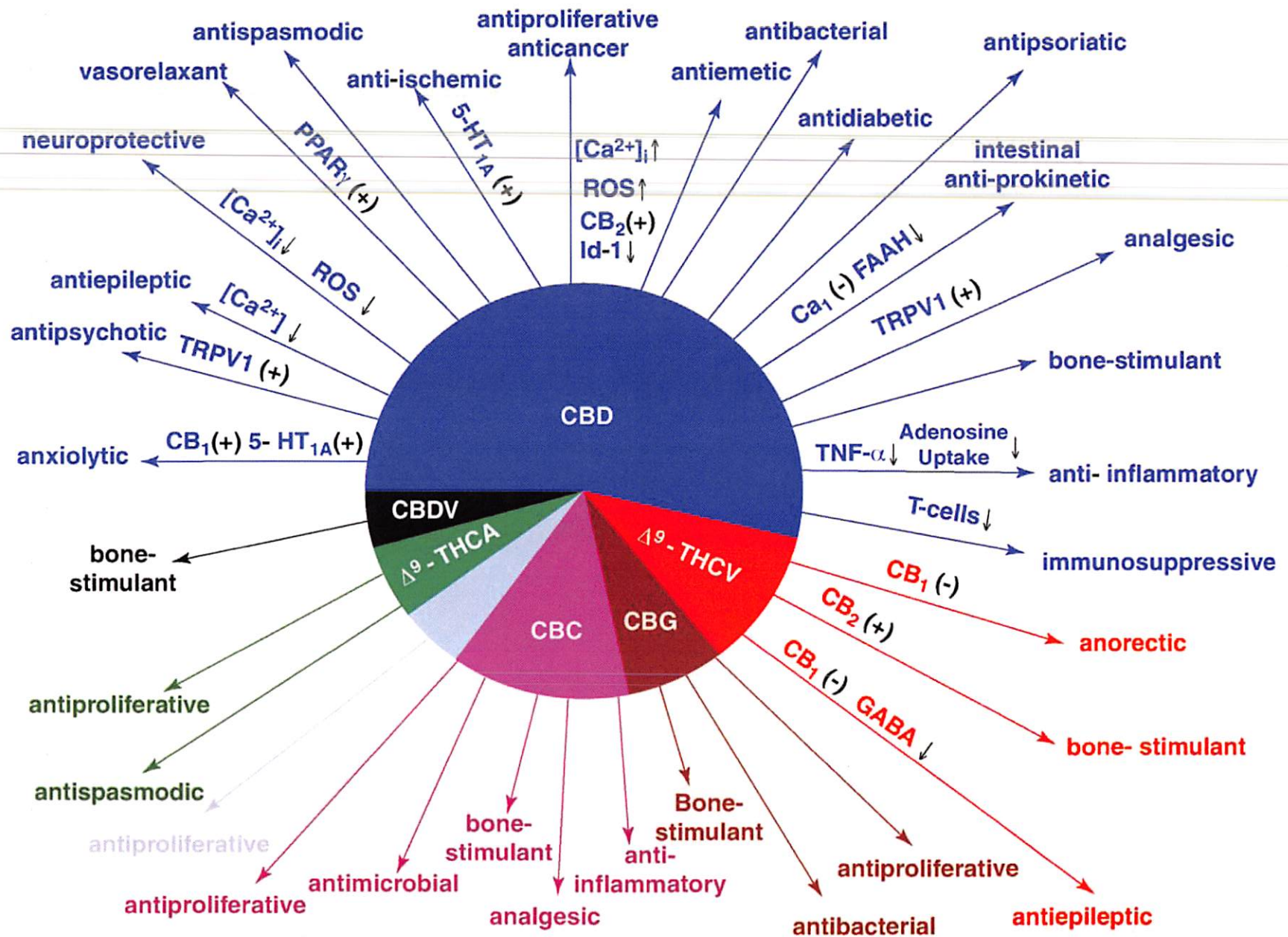
Cannabinoids:

Natural chemicals (anandamide and 2-AG) that bind to cannabinoid receptors in the brain and the body

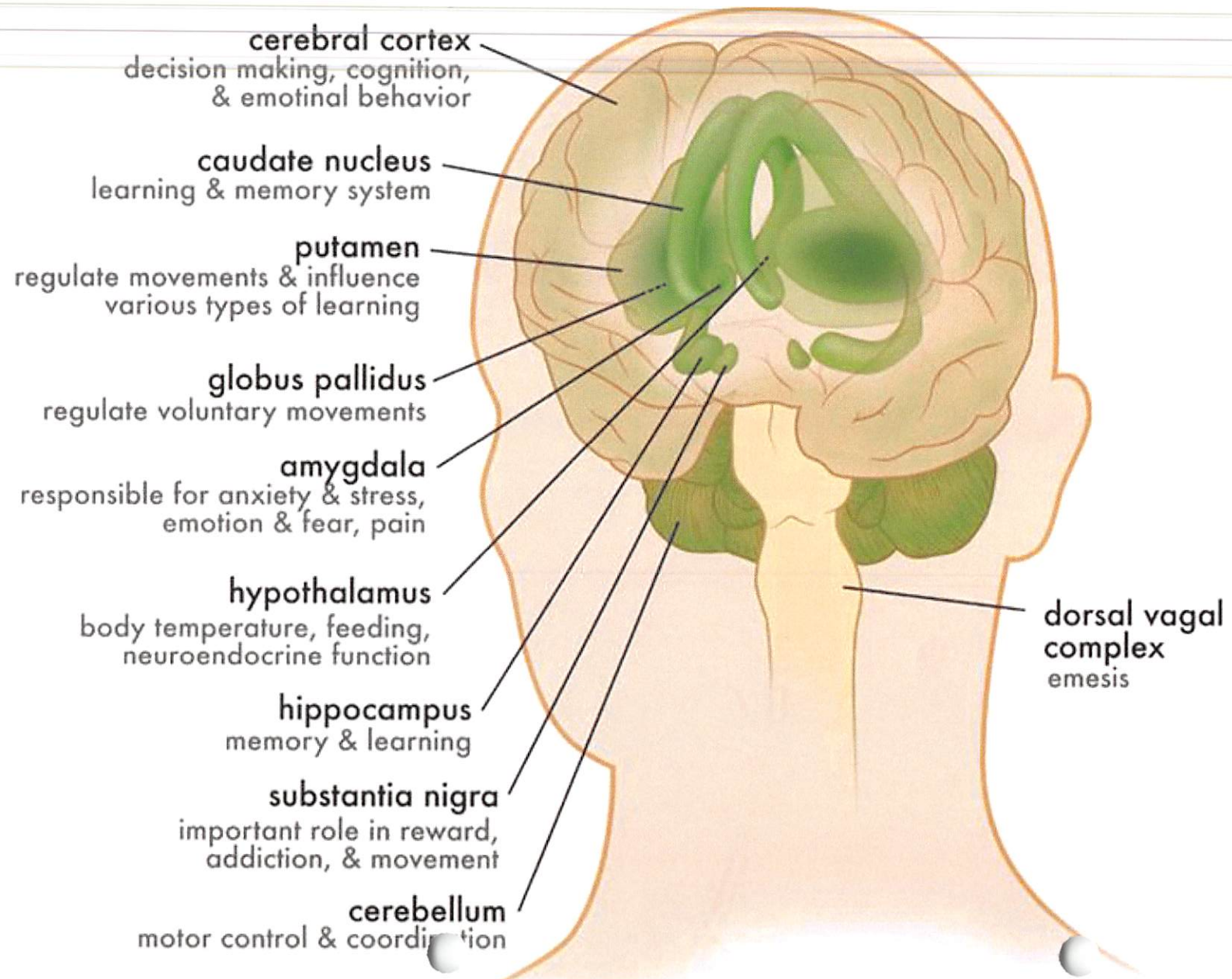
THC:

The main active ingredient in marijuana; THC, also a cannabinoid, interferes with the normal functioning of the endocannabinoid system





Distribution of CB1 Receptors



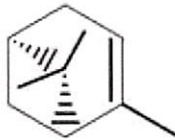
Terpenoid Education

How do Terpenoids affect the body?

Medicinal effects one can expect to see from medicine high in these terpenoids.

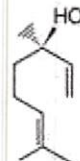
α -Pinene

- Sleep aid
- Anti-anxiety
- Sedative
- Bronchodilator
- Pine aroma
- Anticonvulsant
- Stress reliever
- Anti-epileptic
- Anti-convulsant
- Anti-inflammatory



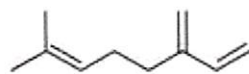
Linalool

- Sleep aid
- Anti-anxiety
- Sedative
- Anti-bacterial
- Pain reliever
- Floral aroma
- Anticonvulsant
- Stress reliever
- Anti-epileptic
- Anti-convulsant
- Analgesic



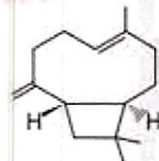
Myrcene

- Anti-tumor
- Anti-fungal
- Anti-cancer
- Anti-spasm
- Sedative
- Aids insomnia
- Anti-inflammatory
- Anti-bacterial
- Muscle relaxant
- Allows THC to take effect quickly
- Levels >.5% result in "couch lock effect"
- Musky aroma



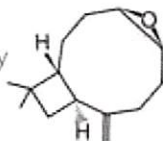
β -Caryophyllene

- Anti-tumor
- Anti-fungal
- Anti-septic
- Anti-inflammatory
- Anti-bacterial
- Muscle relaxant
- Rich spicy aroma



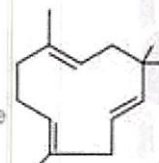
Carophyllene Oxide

- Anti-fungal
- Pain Reliever
- Spicy aroma
- Anti-ischemic
- Anti-inflammatory



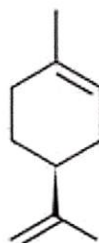
α -Humulene

- Anti-tumor
- Anti-bacterial
- Hoppy aroma
- Anti-inflammatory
- Suppresses appetite



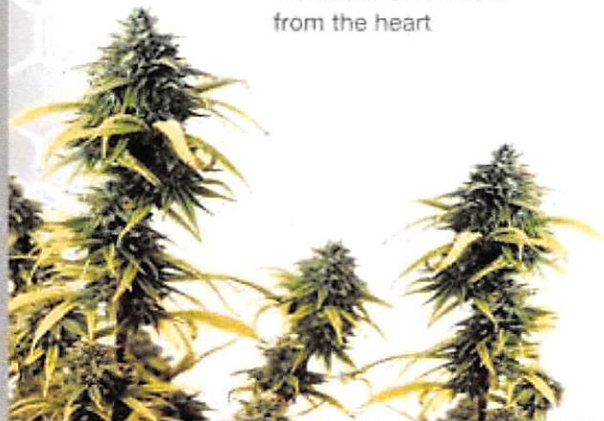
Limonene

- Anti-anxiety
- Anti-depression
- Anti-tumor
- Antiseptic
- Anti-stress
- Immunostimulant
- Orange aroma
- Produces apoptosis of breast cancer cells
- Antimicrobial
- Used clinically to dissolve gallstones
- Relieves heartburn and gastrointestinal reflux
- Increases blood flow from the heart



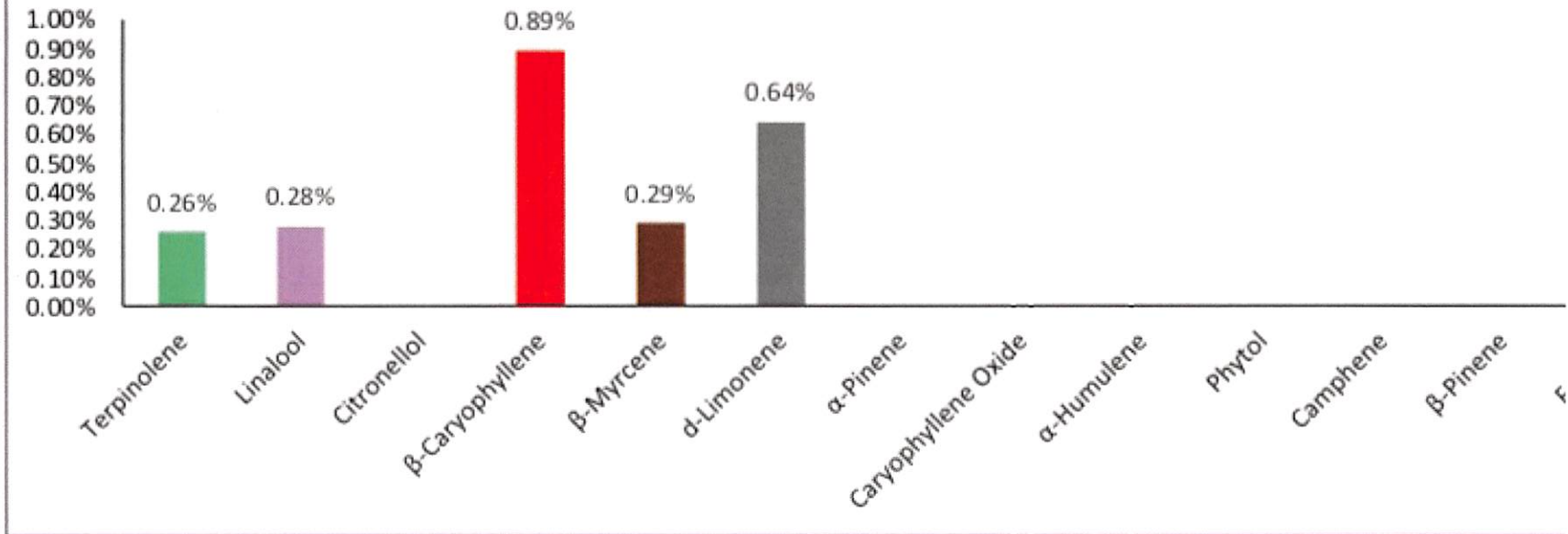
Terpinolene

- Anti-bacterial
- Anti-fungal
- Smokey woody aroma
- Anti-insomnia
- Antiseptic



az med
t.e.s.t.i.n.g
azmedtest.com

Terpenes Percent of Total Mass



Terpene	% mass	mg/g
Terpinolene	0.26%	2.58
Linalool	0.28%	2.77
Citronellol	---	---
β -Caryophyllene	0.89%	8.91
β -Myrcene	0.29%	2.89
d-Limonene	0.64%	6.39
α -Pinene	---	---
Caryophyllene Oxide	---	---
α -Humulene	---	---
Phytol	---	---
Camphene	---	---
β -Pinene	---	---
Fenchol	---	---

Fractions of Measured Terpenes

